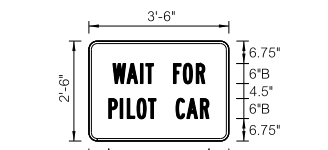


REVISIONS		
REV. NO.	DESCRIPTION	DATE



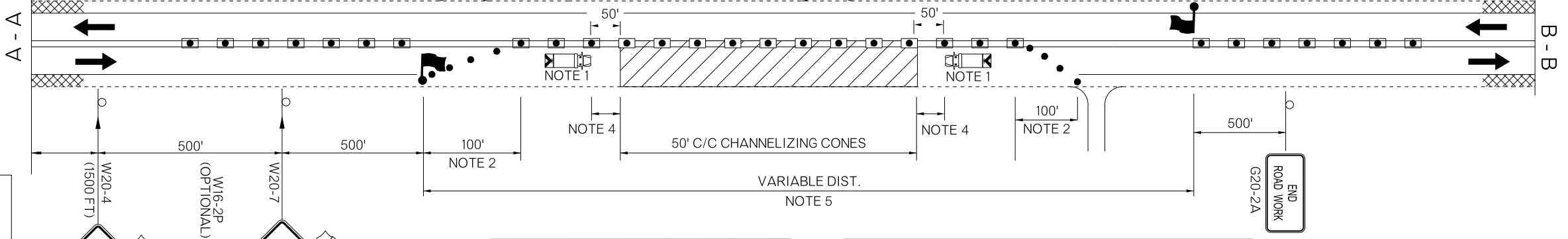
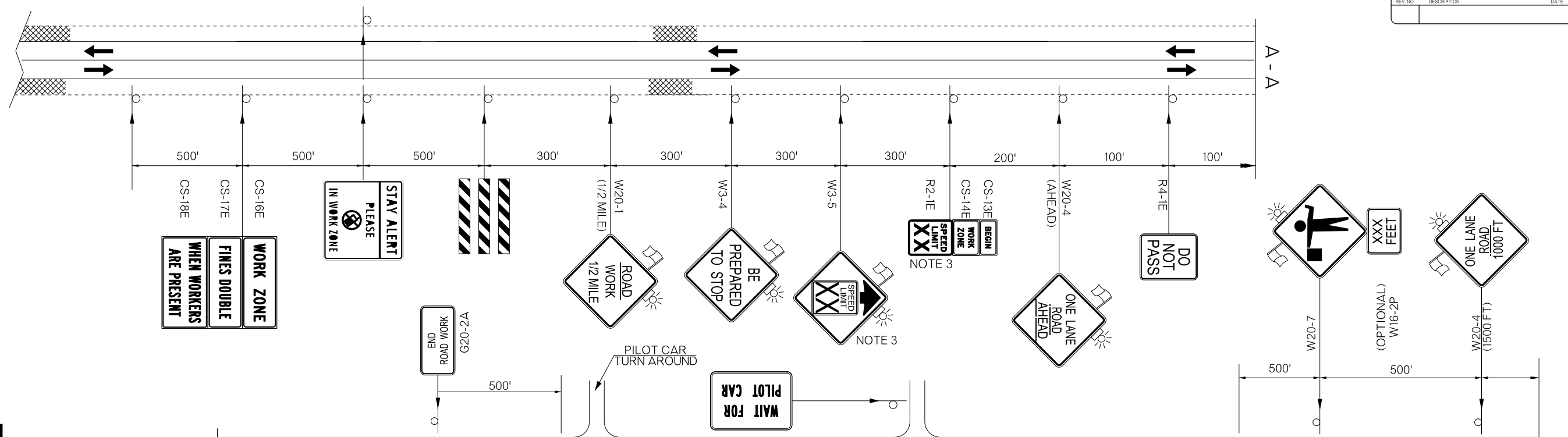
COLOR:
 LEGEND, SYMBOL AND BORDER
 BLACK (NON-REFLECTORIZED)
 BACKGROUND:
 FLUORESCENT ORANGE (REFLECTORIZED)
 FLUORESCENT YELLOW (REFLECTORIZED)
 WHITE (REFLECTORIZED)
 RED (TRANSPARENT)



COLOR:
 LEGEND AND BORDER:
 BLACK (NON-REFLECTORIZED)
 BACKGROUND:
 WHITE (REFLECTORIZED)

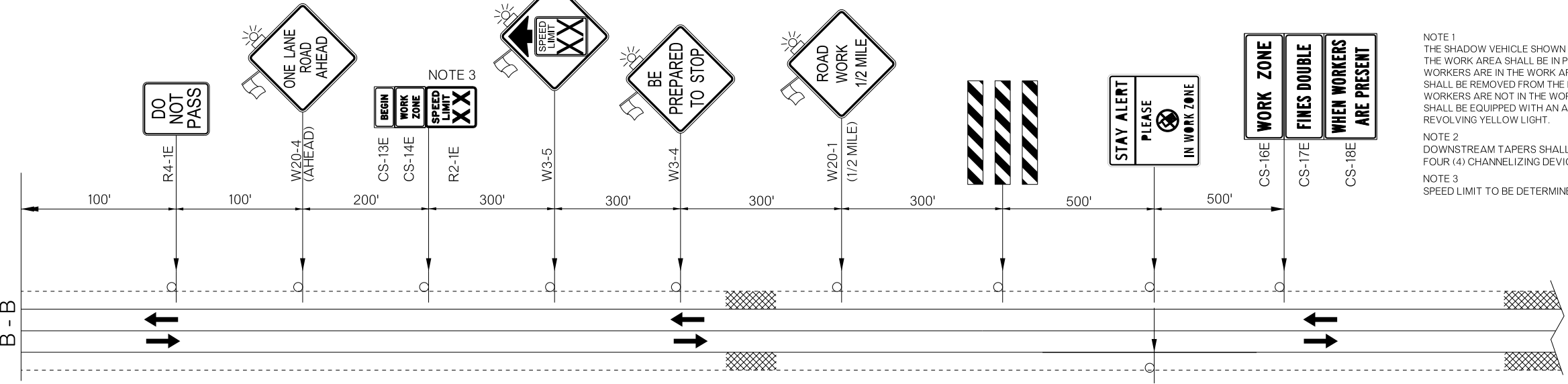
AADT	LANE CLOSURE LIMIT
<4,000	2 MILES
4,000- 9,000	1 MILE
>9,000	0.5 MILE

- KEY:
- SIGN
 - DRUM
 - CHANNELIZER CONE
 - WORK AREA
 - FLAGGER
 - SHADOW VEHICLE (NOTE 1)
 - TRUCK MOUNTED ATTENUATOR



THERE IS NO SUGGESTED SEQUENCE OF CONSTRUCTION IN THIS DRAWING. LANES SHALL BE WORKED AS STATED IN THE PLANS OR AS DIRECTED BY THE ENGINEER. THE DETAILS SHOWN ARE FOR ONE DIRECTION OF CONSTRUCTION ONLY. ALL TRAFFIC CONTROL FOR THE ALTERNATE DIRECTION WILL BE OPPOSITE OF THAT SHOWN.

PAY ITEMS AND NOTES FOR TRAFFIC CONTROL WILL BE CARRIED ON MANDATORY TIED PROJECT JP33294(04).



- NOTE 1
 THE SHADOW VEHICLE SHOWN AT THE BEGINNING OF THE WORK AREA SHALL BE IN PLACE WHENEVER WORKERS ARE IN THE WORK AREA. THIS VEHICLE SHALL BE REMOVED FROM THE ROADWAY WHENEVER WORKERS ARE NOT IN THE WORK AREA. THIS VEHICLE SHALL BE EQUIPPED WITH AN ACTUATED FLASHING OR REVOLVING YELLOW LIGHT.
- NOTE 2
 DOWNSTREAM TAPERS SHALL CONTAIN A MINIMUM OF FOUR (4) CHANNELIZING DEVICES.
- NOTE 3
 SPEED LIMIT TO BE DETERMINED BY THE DIVISION ENGINEER.

- NOTE 4
 A LONGITUDINAL BUFFER AREA, TO ALLOW WORKERS TIME TO EVACUATE THE WORK AREA, SHOULD BE PROVIDED. FOR GUIDELINES ON SETTING THE LENGTH OF THIS BUFFER, SEE STANDARD DRAWING TCS2-1-(LATEST REVISION). ACTUAL LENGTH SHALL BE DETERMINED BY FIELD CONDITIONS AND THE JUDGEMENT OF THE ENGINEER.
- GENERAL NOTES:
 THE FLAGGERS SHALL BE IN SIGHT OF EACH OTHER OR IN DIRECT CONTACT AT ALL TIMES AND SHALL BE POSITIONED TO PROTECT THE WORKERS.
 WHEN NO WORK IS BEING PERFORMED AND TWO LANE TRAFFIC IS OPERATING, FLAGGERS WILL NOT BE REQUIRED. WHENEVER FLAGGERS ARE NOT PRESENT, THE 'FLAGGER' SIGNS SHALL BE REMOVED OR COVERED.
 FLOODLIGHTS SHOULD BE PROVIDED TO MARK FLAGGER STATIONS AT NIGHT AS NEEDED.
- NOTE 5
 THE CONTRACTOR SHALL USE THE (TABLE 1) TO DETERMINE THE LENGTH OF LANE CLOSURE DUE TO AADT AS DEEMED AND APPROVED BY THE ENGINEER.

NOT TO SCALE

DIVISION 1	MULTIPLE COUNTIES	DETAIL:	TMS	7/17
TRAFFIC CONTROL DETAIL		CHECK:	GF	7/17
		ENGINEER:	KCD	7/17
STATE OF OKLAHOMA		GROUP:	ABRAHAM	
DEPARTMENT OF TRANSPORTATION		EM:	MAAROUF	
JOBPIECE NO. 33293(04)	SHEET NO. T004			